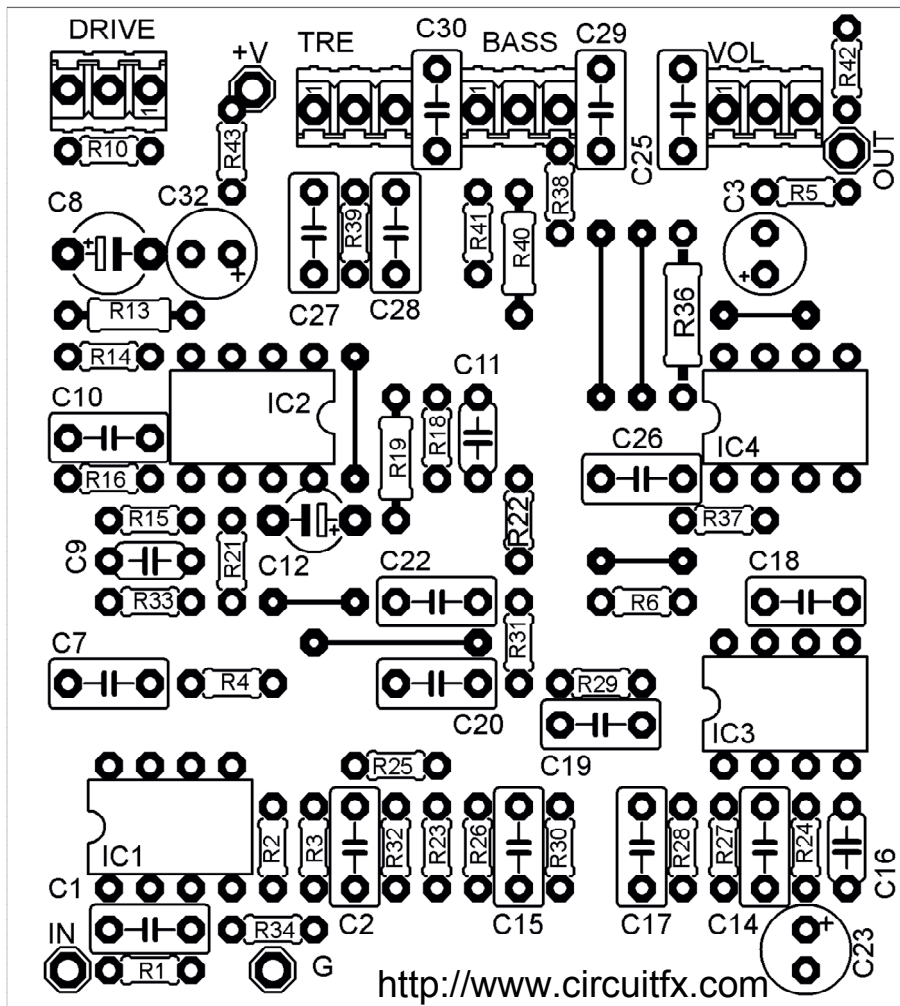


SANSAMP GT2 special

R 1/8 watt 5%

| | | | | | | | |
|-----|---------|-------|-------|-----|---------|-----|---------|
| R1 | 1k | R28 | 33k | C1 | 22n | C17 | 2n2 |
| R2 | 1m | R29 | 10k | C2 | 10n | C18 | 1n |
| R3 | 22k | R30 | 22k | C3 | 2u2/16v | C19 | ดูตาราง |
| R4 | 100k | R31 | 22k | C7 | ดูตาราง | C20 | ดูตาราง |
| R5 | 1k | R32 | 6k2 | C8 | 22u/16v | C22 | ดูตาราง |
| R6 | ดูตาราง | R33 | 10k | C9 | 220p | C23 | 220/16v |
| R10 | 3k3 | R34 | 10k | C10 | 22n | C25 | 10n |
| R13 | 47k | R36 | 100k | C11 | 220p | C26 | 100n |
| R14 | 47k | R37 | 330k | C12 | 2u2/16v | C27 | 10n |
| R15 | 330k | R38 | 10k | C14 | 10n | C28 | 10n |
| R16 | ดูตาราง | R39 | 3k3 | C15 | 47n | C29 | 22n |
| R18 | 330k | R40 | 10k | C16 | 560p | C30 | 22n |
| R19 | 1k | R41 | 10k | | | C32 | 220/16v |
| R21 | ดูตาราง | R42 | 100k | | | | |
| R22 | 10k | R43 | 470 | | | | |
| R23 | 22k | | | | | | |
| R24 | 22k | BASS | 50kB | | | | |
| R25 | 22k | TRE | 50kB | | | | |
| R26 | 10k | VOL | 100kB | | | | |
| R27 | 33k | DRIVE | 100kB | | | | |

IC1-IC4 TL072 หรือเบอร์อื่นๆตามชอบ



| Amp | C7 | R16 |
|----------|--------|-----|
| Marshall | 0.01 | 22k |
| Mesa | 0.0022 | 10k |

| Mode | C19 | R21 |
|----------|--------|-----|
| Hot wire | 0.01 | 1k |
| Hi gain | | 1k |
| Clean | jumper | 22k |

| SPK | C20 | C22 | R6 |
|----------|--------|-------|-----|
| Off Axis | 0.0047 | 0.022 | |
| Center | 0.01 | 0.022 | |
| Classic | | | 22k |